



Published by the  
NAWCC Chapter  
Relations Committee

WINTER  
2025

# Chapter Officers Newsletter

## Chapter Relations Committee

### Committee Chair

Jeff Zuspan (TX)  
[jzuspan@nawcc.org](mailto:jzuspan@nawcc.org)

### Committee Members

Robert Burton (KY)  
[pacrat2345@twc.com](mailto:pacrat2345@twc.com)

Mike Dayton (CA)  
[pmdayton1@gmail.com](mailto:pmdayton1@gmail.com)

Keith Henley (TN)  
[keithhenley@hotmail.com](mailto:keithhenley@hotmail.com)

Frank Webster (KY)  
[F.Webster@twc.com](mailto:F.Webster@twc.com)

### NAWCC Staff

Alex Simpkins (PA)  
[asimpkins@nawcc.org](mailto:asimpkins@nawcc.org)

Marlo Davis (PA)  
[mdavis@nawcc.org](mailto:mdavis@nawcc.org)

## SAVE THE DATES

2026 Time Symposium  
[symposium.nawcc.org](http://symposium.nawcc.org)  
May 3-10

2026 National Convention  
[natcon.nawcc.org](http://natcon.nawcc.org)  
June 25-28

### Hello, Chapter Officers and Representatives,

As we approach the end of another year, the Chapter Relations Committee has been reflecting on the successes and challenges of 2025.

We are pleased to see many Chapters revitalized with renewed activity. Several groups have adopted new ideas—often inspired by conversations with other Chapters—and incorporated them into their monthly meetings. Show & Tell segments, presentations, potluck meals, door prizes, and even raffle drawings for attendees have brought fresh energy and engagement.

Unfortunately, some Chapters still face difficulties, with only a handful of members attending meetings. Trying new ideas can be intimidating, and sometimes the excitement simply fades. However, in several cases where Chapters made a concerted effort, they were able to hold on, turn a corner, and rebuild momentum. I know it can sound easy for me to encourage these initiatives from afar, but sustained progress always requires sustained effort.

During our spring Zoom meeting, we introduced JD Castle from Texas, who shared valuable insights about developing new leadership. He discussed how to welcome and encourage members to step into roles such as president, officer, or board member, and how current leaders can mentor and prepare others for leadership positions. Effective leadership transition is essential for every Chapter. **JD kindly provided us with his outline, which we included in the spring issue, and is provided on page 9 in this issue.**

At the National Convention in York, PA, in June, we held our annual Chapter Representatives Meeting. More than 40 members attended, representing over 20 Chapters. The CRC members were introduced: Bob Burton (KY), Frank Webster (KY), Keith Henley (TN), and Mike Dayton (CA). Marlo Davis from NAWCC Headquarters was also in attendance. Each of us shared activities and ideas from our regions:

- **Bob Burton (KY)** encouraged Chapters to consider hosting a regional event or even co-chairing a National Convention. Regionals are a great way to grow membership and raise funds. Chapters that co-host a National Convention receive 25% of the proceeds—with no financial risk. The NAWCC Regional and National Committees are ready to assist.
- **Frank Webster (KY)** highlighted community resources such as local libraries, which often provide free display or meeting space and may even promote events through their own channels.

*continued on page 2*

- **Keith Henley (TN)** showcased a remarkable Chapter project: restoring an English tower clock movement during monthly meetings. Members built hands, a dial, and even a 20-foot tower to display the finished clock.
- **Mike Dayton (CA)** shared an engaging idea: a Show & Tell session where participants receive a raffle ticket for a chance to win a cash prize. It has proven to be a great motivator for involvement.
- **Marlo Davis (NAWCC Headquarters)** reminded Chapters that they can request a list of members in their area—an excellent tool for promoting meetings and events.
- **Alex Simpkins (NAWCC Headquarters)** has assisted Chapters with sending e-blasts about meetings and activities. In 2026, he will be assisted by Janet Thompson ([jthompson@nawcc.org](mailto:jthompson@nawcc.org)) at HQ to send those e-blasts.

I also shared a simple outreach idea from my local Chapter in Texas: stapling business cards to old *Bulletins* and leaving them in waiting rooms around town. The cards have a QR code linked to the Chapter website. It's an easy way to spark curiosity and broaden awareness in our communities.

It was a pleasure meeting many of you in person and finally putting names to faces. Even small efforts can make a meaningful difference in revitalizing your Chapter. We remain committed to supporting you and serving as a resource for your future endeavors.

Thank you to all who are dedicated to your NAWCC Chapters and communities. Please keep up the great work, and let's continue moving forward together to keep the clock and watch collecting community strong!

Jeff Zuspan, Chair  
Chapter Relations Committee

## Donate to Our Endowments

Please consider supporting the NAWCC as we move forward. Donations are invested to provide long-term funding for the NAWCC.

[Click Here to donate!](#)

## Tax Deductibility

Information about the tax deductibility of NAWCC Individual Memberships is available via this link:

[Nawcc.org>About>Association Documents>NAWCC Member Documents](http://Nawcc.org>About>Association Documents>NAWCC Member Documents)

## Do You Know a Potential NAWCC Award Recipient?

Acknowledge a fellow member's achievements in horology or service to the NAWCC by nominating them for one of the Association's prestigious awards. Guidelines and forms are available online at [nawcc.org/about/member-recognition-awards/](http://nawcc.org/about/member-recognition-awards/).

# Keep Calm and Ask a Librarian

*Contributed by Frank Webster (KY)*

I hear from many Chapters about the rising cost of meeting spaces. Rental fees, insurance requirements, and limited availability can make it difficult to host regular meetings or special events. But there's a simple solution that many groups overlook.

## Keep Calm—and Ask a Librarian

Your local library may be one of the most valuable (and completely free) resources available to your Chapter. In fact, there are **two major benefits** to partnering with a public library.

### 1. Free Meeting Spaces

Most libraries offer **community rooms at no cost**, available for clubs, nonprofits, and educational groups. A librarian can check the schedule and reserve a space for your meeting, workshop, or presentation.

While each library may have a few guidelines—such as cleanup requirements or limits on food—these rules are typically easy to work with. Whether you're looking for a location for your monthly Chapter meeting or planning an event to attract new members, it's worth asking.

### 2. Libraries Want Programs That Bring the Public In

Libraries are always seeking programs that enrich their community and draw new visitors. Horology fits perfectly into this mission. Consider offering programs such as:

- **"The Public Clocks of Our Town"** – A presentation highlighting the history and stories behind local clocks.
- **"Watch and Clock Road Show"** – A hands-on event where the public can bring in clocks or watches for identification and basic evaluations.

These events serve the public, support the library, and introduce more people to the world of watches and clocks. Even better, libraries often have **built-in promotional resources**—newsletters, bulletin boards, event calendars, social media, and flyers—that they will use to advertise your program **at no cost to you**. With sufficient notice, your event could receive excellent exposure throughout the community, helping you reach potential new members and raise awareness.

## A Simple Step with Big Benefits

You don't need a library card, special credentials, or a long proposal to give this idea a try. Just stop by your local library, explain who you are, and ask what options are available.

So the next time meeting costs or event planning start to feel overwhelming, remember:

**Keep calm and ask a librarian.**

# Merritt's Clock Supply: Alive, Growing, and Looking toward the Future

*Contributed by Jim Rodman, Owner of Merritt's*

In recent weeks, a rumor has circulated suggesting that Merritt's Clock Supply has closed or is preparing to go out of business. These rumors have caused confusion across the horological community, and I want to address them directly. **Merritt's is very much in business—and will continue to be.** In fact, my family and I purchased Merritt's in June 2025, and we are fully committed to strengthening and expanding the company for years to come.

My name is Jim Rodman, and together with my wife, Trish, and our sons, Jeff and Justin, we are proud to be the new owners of Merritt's Clock Supply. Our family is deeply rooted in horology as active members of the NAWCC and Chapter 1 in Philadelphia. We understand the significance of Merritt's to clockmakers, collectors, and enthusiasts across the country.

We are currently operating from the long-standing Douglassville, PA, location but expect to move the business to the Lehigh Valley in 2026—about an hour and fifteen minutes north. This move will position us for improved operations and long-term growth.

I have been in the clock business since 1992, following a four-year apprenticeship with a Master Clockmaker. I opened my first shop in Muncy, PA, in 1993 and established my current shop in Nazareth in 2021. With decades of hands-on repair, supply, and business experience, I am excited to bring new energy and steady leadership to Merritt's.

Over the past five months, our team has worked hard to improve essential parts of the business—accelerating shipping times, rebuilding inventory, and identifying more reliable suppliers. The entire industry has been affected by tariffs, supply-chain disruptions, and the loss of key manufacturers following the pandemic. In response, we are actively pursuing US-based production for many components to stabilize future supply.

Some items, such as German cuckoo clock parts, remain difficult to obtain. One major shipment has been delayed for nearly three months due to overseas transit issues. Despite these challenges, we remain committed to restocking and broadening our offerings.

Looking ahead, we have exciting developments planned for the coming year. And for anyone who believes the clockmaking world has no future—think again. Shops nationwide report heavy workloads, clockmaking and watchmaking schools have waiting lists, and we continue to meet many young people entering the trade or discovering the hobby. Horology is not only alive—it is experiencing a quiet resurgence.

As we shape the next chapter of Merritt's, I want to express heartfelt appreciation to Rick Merritt and the entire Merritt family for 87 years of service to the horological community. We aim to honor their legacy as we move the company forward.

Merritt's is alive—and getting better every day. We welcome constructive feedback and thank you for your continued support.

**Ph:** 1-800-345-4101 • **Winter Hours:** Parts Department: Mon–Fri, 9 a.m.–3 p.m.; Clock Shop: Mon–Fri, 9 a.m.–3 p.m.; Sat, 9 a.m.–2 p.m.

# Chapters: Do You Have a Member Interested in Learning to Teach a Workshop?

The NAWCC is pleased to offer an exciting opportunity for Chapters to strengthen their local educational programs. Any Chapter that wishes to send one member to the NAWCC School of Horology to take a **core** workshop course may do so **at no cost to the Chapter**—the NAWCC will cover the class fee and all required materials.

The following are examples of the **core workshops**:

- Introduction to Antique Clocks
  - 1-day and 2-day workshops (time-only movement)
- American-Style Time/Strike Movement
- Rack and Snail Striking: An Introduction to Tall Case Clocks
- Introduction to the Anniversary, or 400-Day, Clock
- Pivot Polishing/Burnishing and the Bushing Machine
- The Chiming Clock

As long as space is available, Chapters can enroll a member to learn directly from our outstanding instructors. Clock **core** workshops are offered year-round, with schedules available on the NAWCC website ([nawcc.org/events](http://nawcc.org/events)) and regularly advertised in the monthly e-newsletter.

This is a wonderful way to bring hands-on horological education back to your Chapter, helping to train, inspire, and grow your local membership.

While your member is in Columbia for the workshop, consider arriving a little early. They can spend some time volunteering at the Museum, where there is always a need for helping hands.

If your Chapter is interested, please contact [education@nawcc.org](mailto:education@nawcc.org) for more details.

**Come to Columbia, learn a workshop, and bring new skills back to your Chapter!**

## NAWCC Staff Directory

Ph: 717-684-8261

Rory McEvoy (x209)  
Executive Director  
[rmcevoy@nawcc.org](mailto:rmcevoy@nawcc.org)

Marlo Davis (x210)  
Member Services Manager  
[mdavis@nawcc.org](mailto:mdavis@nawcc.org)

Lisa Davis (x201)  
Member Services Asst.  
[ldavis@nawcc.org](mailto:ldavis@nawcc.org)

Alex Simpkins (x232)  
Digital Communications  
[asimpkins@nawcc.org](mailto:asimpkins@nawcc.org)

Ken De Lucca (x237)  
Education Director  
[kdelucca@nawcc.org](mailto:kdelucca@nawcc.org)

Samantha Gradel (x204)  
School Coordinator  
[sgradel@nawcc.org](mailto:sgradel@nawcc.org)

Thomas Stocker (x214)  
Librarian/Archivist  
[tstocker@nawcc.org](mailto:tstocker@nawcc.org)

Janelle Soash (x225)  
Collections Assistant  
[jsoash@nawcc.org](mailto:jsoash@nawcc.org)

Laura Taylor (x206)  
Managing Editor  
[ltaylor@nawcc.org](mailto:ltaylor@nawcc.org)

Michael Schwartz (x207)  
Associate Editor  
[mschwartz@nawcc.org](mailto:mschwartz@nawcc.org)

Janet Thompson (x223)  
Museum & Publications  
Assistant  
[jthompson@nawcc.org](mailto:jthompson@nawcc.org)

David Ganse (x234)  
Admissions & Museum  
Store Manager  
[dganse@nawcc.org](mailto:dganse@nawcc.org)



## 2026 NAWCC Crafts Competition

### Celebrating Members' Skills!

The Crafts Competition is an excellent opportunity for all craftspeople to have their work judged against that of their peers.

All classes will be judged by qualified experts. We will have our annual People's Choice award, which will be determined by ballot. Ballots will be in the crafts exhibit area at the York Expo Center and can be cast by both members and the public. The People's Choice winner will be announced at the evening banquet on June 21.

**Purpose of the Competition:** To showcase the finest work in current-day horological crafts. This contest highlights each artisan's talent as well as their understanding of history's influence on their craft. It provides opportunities to expand each member's historical appreciation of clocks and watches.

Members (excluding Youth Membership) of the NAWCC, in good standing at the time of any scheduled competition, are eligible to enter.

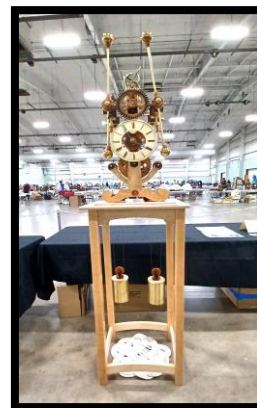
Youth Members who are 17 years of age or younger are eligible to enter all classes, and they will be judged as a separate group with medals and awards. Their projects will be displayed with all entries but judged as a Youth Entry.

There are many ways to enter the event:

1. Entries can be presented at the Convention by the entrant or his/her representative.
2. Arrangements may be made so entries can be shipped in advance. For more shipping instructions, contact Bill Slough.
3. You can send details in a binder or a digital file to be printed and placed in a binder. The items must be documented with photos or drawings to show the condition when the project began and when it was completed.

If you don't have an entry but would like to participate, we do need judges, helpers, and sponsors for the Crafts Competition.

For more information or to volunteer, please contact Bill Slough, Crafts Competition Committee Chair: 817-829-5675 or [nawcc.craft@gmail.com](mailto:nawcc.craft@gmail.com).





# The Friends of the West Coast Watch & Clock Museum Chapter 180 (Vista, CA)

The Friends of the West Coast Watch and Clock Museum (WCWCM), Chapter 180, was formed to grow, support, and preserve the museum located in Vista, CA. Our members come from across the United States and Canada, providing the financial resources and volunteer time that make this unique museum possible. In partnership with the Antique Gas & Steam Engine Museum (AGSEM), Chapter 180 hosts open-bench sessions on the third Thursday of each month. All NAWCC members are welcome to attend meetings and bench sessions.

## A Brief History

In 2005, Chapter 180's West Coast Clock and Watch Museum relocated to the old courthouse in Bellingham, WA. Although a wonderful temporary home, it was never intended to be permanent. By 2015, discussions began between WCCWM and AGSEM to merge the museum into AGSEM's family of museums and organizations in Vista, CA.

In June 2016, the WCCWM collection began exhibition inside AGSEM's History of Local Agriculture (HOLA) Center. Since then, we have been fortunate to receive many rare, beautiful, and historically important pieces. Today, Chapter 180 is working to expand the museum further, aiming to create a dedicated space worthy of this growing collection.

## Moving Forward: The Expansion

Chapter 180 is excited to announce the next phase of our mission: expansion! This progress would not be possible without the extraordinary support of longtime friend and supporter Bob Peischl.

Bob has been a steadfast advocate for the West Coast Clock and Watch Museum for many years. His recent generous donation toward the expansion project is yet another example of his remarkable dedication to preserving horological history. Supporters like Bob make our mission possible, and we are truly grateful for his continued encouragement and belief in our work. Thanks to his generosity, we are closer than ever to expanding our exhibit space and welcoming even more visitors, collectors, students, and clock enthusiasts. His contribution helps ensure that the artistry and legacy of timekeeping will continue to inspire future generations.

## Expansion Progress



Exciting developments are happening at the museum: the walls of our new expansion are up! Each step brings us closer to unveiling a larger, more immersive space filled with ticking treasures, fascinating history, and timeless stories. The expansion walls have now been primed and painted, and brand-new doors have been installed to welcome future visitors. To follow our progress and see updated photos, visit our Facebook page: [facebook.com/westcoastclockmuseum](https://facebook.com/westcoastclockmuseum).

## Join Us

Please consider becoming a member of Chapter 180 or making a financial donation to help strengthen and grow this important museum. Every contribution, large or small, helps keep our mission alive.

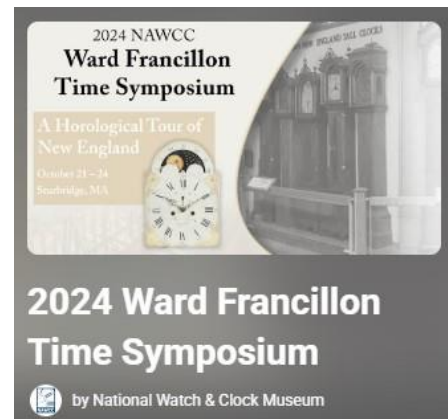
A heartfelt thank-you to all Chapter 180 members and to our Chapter president, Andre Perreault ([ataboyandre@gmail.com](mailto:ataboyandre@gmail.com)).

# NAWCC Videos Online

There are many educational videos available online for members to enjoy on their own or at a Chapter meeting.

Visit <https://www.nawcc.org/research/nawcc-digital-video-archive/> to access a variety of videos:

- NAWCC Ward Francillon Symposium Lectures
- NAWCC Webinars
- YouTube Videos
  - *Collecting Conversations Series*
  - General Movement Servicing with Ken De Lucca
  - National Conventions
  - Many more!
- Zoom Videos
- 300+ Videos on Vimeo



Plus, the NAWCC Library & Research Center has hundreds of educational DVDs available for lending. Details are online at <https://www.nawcc.org/research/nawcc-digital-video-archive/>.

## Got Officers?

NAWCC headquarters needs your list of Chapter officers and their email addresses!

When new officers are elected or when contact information changes, please notify HQ's Alex Simpkins via email at [asimpkins@nawcc.org](mailto:asimpkins@nawcc.org). He'll make sure the officers are updated on [nawcc.org/local-chapters/](https://nawcc.org/local-chapters/), where Chapter websites are linked and where potential new members can connect with your Chapter.



As a proud member of the [Blue Star Museums](#) program, the National Watch & Clock Museum provides free admission from Armed Forces Day through Labor Day each year for active military personnel and their families, including the National Guard and Reserve.



# Lead On!

## Transitioning & Maintaining Chapter Leadership

*Contributed by J. D. Castle*

One of the biggest challenges faced by NAWCC Chapters is securing volunteers and fostering new leadership. Over time, we often see a few dedicated individuals carrying most of the workload, with long-term leaders staying in place because they feel no one else will step up, or fewer members remain active.

As leaders, it is our responsibility to address these issues by actively engaging others. But how do we do that? Here are some key insights:

### Leadership

- **Establish and maintain a vision:** Create a clear statement that reflects the Chapter's purpose and goals.
- **Engage all members:** Leadership isn't just about leading; it's about ensuring every member feels involved and valued.
- **Communicate effectively:** Be open, clear, and consistent in your communications with the team.
- **Foster a collaborative approach:** Make every step a team effort, and celebrate successes together.
- **Adopt "Servant Leadership":** Of all leadership models, this one is strongly recommended. It focuses on empowering and supporting your team rather than simply directing them.

### Preparing for the Transition

- **Create excitement:** Transitioning leadership should be seen as an opportunity for growth and renewal, not just a change of hands.
- **Review the current structure:** Take time to understand how the Chapter is currently organized and identify areas for improvement.
- **Build energy around improvement:** Find ways to revitalize the group through new ideas and initiatives.
- **Celebrate the change:** Make the leadership transition a meaningful event, celebrating both past achievements and the future ahead.

### The Transition

- **Hold a celebratory gathering:** Host an event to mark the transition, making it a memorable occasion for all involved.
- **Acknowledge accomplishments:** Even if the current leadership only maintained the Chapter's operations, celebrate their efforts and successes.
- **Current leadership's perspective:** The outgoing leader should speak to the value, history, and potential benefits of the new leadership.
- **Symbolic passing of the baton:** Consider a symbolic gesture, such as passing a pendulum or large key winder, to signify the transition of leadership.

# Lead On! *(continued)*

## The Path Ahead

- **Encourage member input:** Ask every member to suggest one way to improve the Chapter. This helps create ownership and investment in the Chapter's future.
- **Stay visible:** Regularly check in with members, keeping them engaged and involved in Chapter activities.
- **Solidify key functions:** Appoint Program Directors for essential activities to ensure consistency and smooth operations.
- **Create a pipeline for future leaders:** Depending on the Chapter's size, having Program Directors can serve as a developmental channel for the next generation of leadership.

## Foundational Fundamentals

- **Show passion:** As a leader, your enthusiasm will inspire others.
- **Be sincere and transparent:** Always communicate openly and honestly with your team.
- **Confirm communications:** Never assume. Always confirm important details to avoid misunderstandings.
- **Set the tone:** As the leader, you establish the Chapter's culture. Make sure it's one you're proud of.

## Call for Speakers

Did you know the NAWCC website has a Speakers Bureau list at <https://www.nawcc.org/about/chapter-support/>?

We're currently updating this list and are eager to include more speakers! If you have a talk or lecture you'd like to share, and you're open to traveling to Regional or Chapter meetings, we'd love to hear from you. Send a message to the Chapter Relations Committee via <https://www.nawcc.org/about/organization-contacts/chapter-relations/>.

Once the list is updated, we'll send it to those interested in booking speakers. This is a fantastic opportunity to support NAWCC Chapters and Regionals by sharing your expertise!

# Chapter Highlights

Share the latest goings-on in your Chapter by submitting a Chapter Highlights report for publication in the *Watch & Clock Bulletin*!

Chapter reporters provide summaries of the educational content of programs, workshops, and Chapter- and community-related horological projects. Reports also mention future meetings, topics, and speakers, as well as members who recently passed away. Each Highlight report should be approximately 600 words and will be edited for length, clarity, spelling, and grammar. The reporter's name will appear at the end of the submission when it is printed in the *Bulletin*.

Photographs should be high resolution with a minimum of 300 dpi or 500 kb in size. A photo should be sent as an attachment to an email; do not embed the photo into the text or in the body of the email. Only one photo per Chapter is permitted due to space limitations.

The deadlines for each issue are:

<b><i>Bulletin Issue</i></b>	<b>Submission Deadline</b>
January/February	November 10
March/April	January 10
May/June	March 10
July/August	May 10
September/October	July 10
November/December	September 10

Details and a report template are available at <https://www.nawcc.org/publications/chapter-highlights-submission/>.

Reports and any questions should be emailed to [ChapterHighlights@NAWCC.org](mailto:ChapterHighlights@NAWCC.org).