

National Watch & Clock Museum

Five-Year Plan 2024–2029

Year One Progress Report January 2026

Over the last year, the visitor experience at the Museum has vastly improved thanks to the support of NAWCC members, donors, volunteers, industry partners, and local elected officials. Most of the changes are visible. However, Museum visitors will be unaware of the most critical changes to the facility in 2025. The environmental control system had been in place for over 25 years and had critical components that were beyond use and repair.

Across the year, thanks to a \$1 million award from a Local Share Account state grant, the three main rooftop units were replaced, and this work was successfully completed with minimal disruption within the Museum. To reduce the burden of the principal air handler, an extra unit was installed to provide the ideal environment for the reserve collections.

This additional unit also enabled the reconfiguration of the gallery spaces to create an adjunct to the Public Time gallery that will serve as the permanent home to an Ansonia street clock, made circa 1885. This important clock is the best surviving example of the model and one of the tallest street clocks produced in the US.

Over the last 12 months, the Museum collection has been enhanced by significant object donations. These donations have prompted us to adjust our gallery planning somewhat. Completed projects and changes to the earlier plan are outlined in this document.



The old air handler was removed in April 2025.

Public Time Gallery



The gallery at the end of 2024.



The gallery in December 2025.

Completed Tasks

- All 15 clocks in the gallery are now displayed on platforms. Twelve of the clocks have been conserved and now run daily.
- Five clock movements are now displayed behind guardrails.
- Wood planking on the wall evokes the interior of a church tower to great effect in the display of two E. Howard clock movements.
- Wall graphics and additional interpretation provide an introduction to the subject of tower clocks.
- Brick-effect paneling adds interest to the display of the Aaron Dodd Crane clocks.
- A push-button interactive display demonstrates Crane's daisy cam motion work, using original components set in an acrylic case.
- Large information panels from previous displays were recycled and covered with printed vinyl for this gallery.
- A display of clock weights was installed.
- The double doors in the gallery have been removed and replaced with an open Gothic arch, to be revealed in February 2026.

Public Time Gallery *(continued)*



E. Howard display.



Weights display.



Rear wall display.

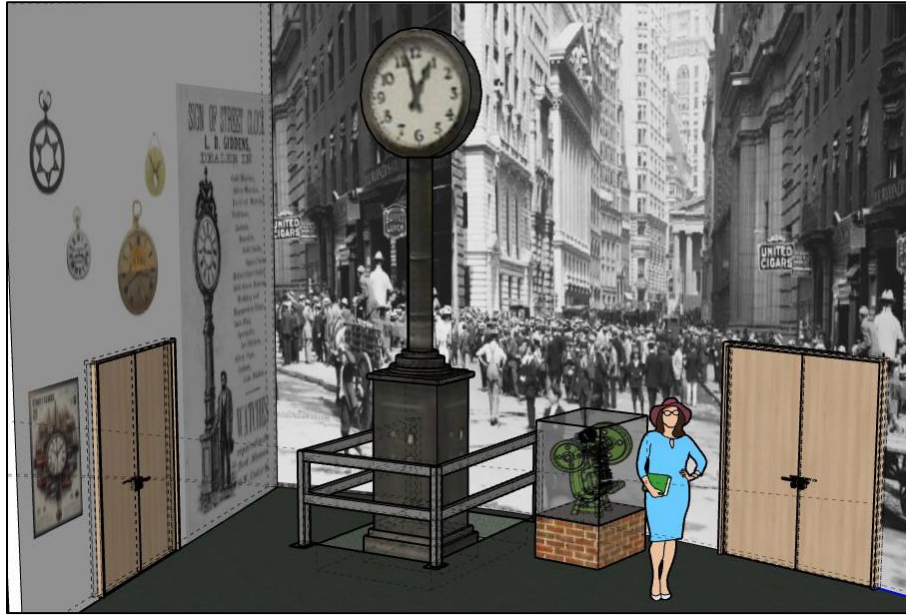
Remaining Tasks

- Mount label holders on the guardrail.
- Reconfigure the lighting: move away from floodlighting in the rear section and use shadows for dramatic effect.
- Install another vinyl information panel that explains the importance of Crane's daisy cam invention.

Budget

- **Projected Cost:** \$39,000
- **Actual Cost to Date:** \$25,927

Ansonia Street Clock (Adjunct to the Public Time Gallery)



Visualization of the completed gallery space.

Completed Tasks

Thanks to the installation of the new air handler in the collection's storage area, this project has accelerated and moved from the long-term project list to being underway now.

- As of January, the adjunct space is built and will be ready in February 2026.

Remaining Tasks

- The cast iron clock requires painting and gilding. This work will be performed by volunteers in spring 2026.
- Installation of the clock is planned for July 2026.

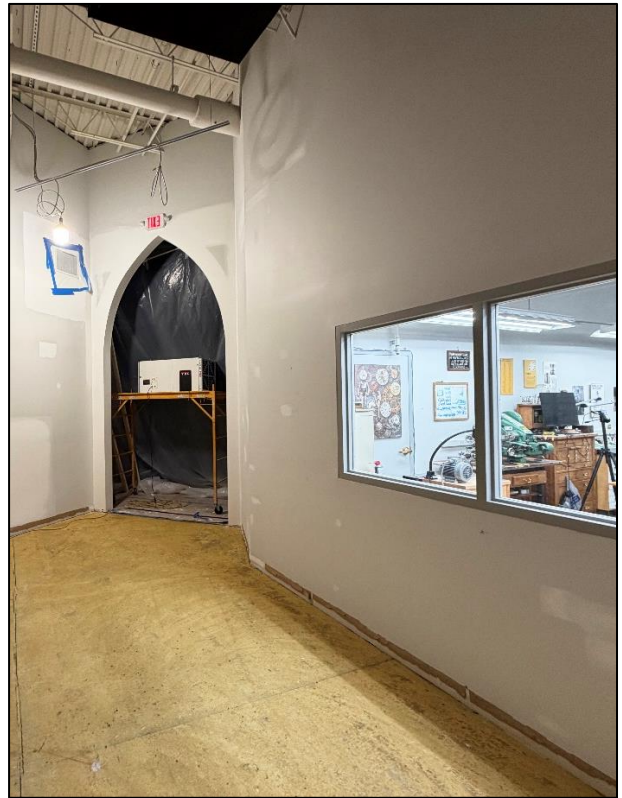
Budget

- **Projected Cost:** \$135,000
- **Donations to Date:** \$17,000

Ansonia Street Clock *(continued)*



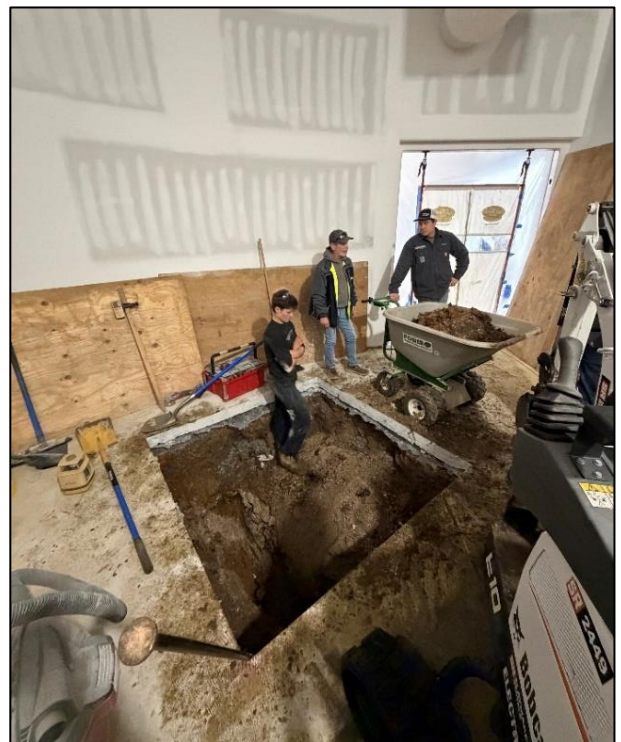
Polythene tent to contain dust.



The arched doorway to the new space.



The gallery space prior to cutting into the floor.



Testing the firmness of the sub-soil.

Wristwatch, Bulova, and Maker Galleries



The galleries as they appeared in 2024.



The gallery spaces today.

Completed Tasks

- Partitions were removed.
- The walls were refurbished and painted.
- The old carpeting was removed and replaced with wood-effect vinyl flooring.
- The Dawn of the Wristwatch display was curated and installed.
- A new display case for the Museum's wristwatch collection was installed.
- Two clocks relating to John Harrison were installed.
- The Bulova gallery was installed.
- The Maker Gallery was reconfigured to include work by James Arthur.
- A display of watches made by local watchmaker RGM Watch Co. was installed.

Wristwatch, Bulova, and Maker Galleries *(continued)*

Budget

Projected Cost: \$37,000

Donations: \$43,000



The Bulova gallery.



The Dawn of the Wristwatch display.



(foreground) The iconic James Arthur factory clock, made in 1897.



Bespoke showcase housing the work of RGM Watch Co.

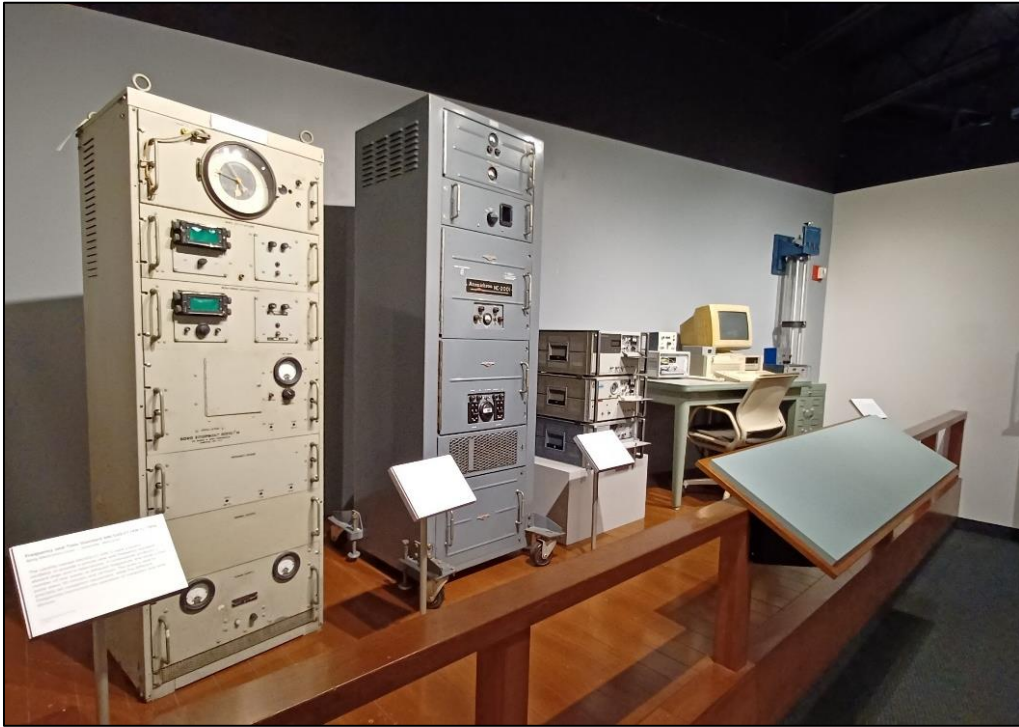
Remaining Tasks

- Design and install modular displays in the wristwatch showcase. Utilize the donated 100 hours of design time for this project.
- Bridge the connection between Harrison and the modern wristwatch by introducing the principal technologies.
- Using the Harrison and LeRoy regulator clocks, explain how watches are tested.

Work on these galleries is anticipated to continue for two more years.

Budget for 2026: \$10,000

Precision Timekeeping



The new Precision Time display.

Completed Tasks

- The display items have been conserved and installed.
- Label stands were made in-house and installed.

Remaining Tasks

- The large display board is in production and scheduled to be printed and installed in February 2026.

Budget

- **Projected Cost:** \$5,000
- **Actual Cost to Date:** The majority of work on this display has been produced in-house with an outlay of around \$200 for materials.

Addition to the Five-Year Plan

Incorporation of Recent Donations



The following donations have been received:

- The William H. Miller collection
 - This donation has significantly enhanced our collections of European and electrical clocks.
- Early American tall clocks
- George and Cathy Goolsby collection
 - This donation includes early American tall clocks with wood or metal movements and Pennsylvania shelf clocks.
- A 17th-century English table clock by George Stevens
- Herschede tall clocks

Tasks

- Overhaul the displays of American and European clocks and electrical clocks.
 - Move away from categorizing the displays by clock type and instead reconfigure them to capture individual stories and thematic presentations using a mixture of wall, shelf, and other clocks.
 - Integrate 20th-century American clockmaking.
 - Create a new European gallery.

Notes

This project will change the look and style of presentation for a major portion of the Museum's floor plan. The new additions to the collection will help us share the stories of American and European clocks as material culture. The new layout will provide a useful opportunity to portray the points of crossover in style and methods of construction.

Budget: *To be determined*

